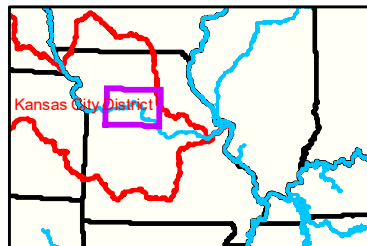
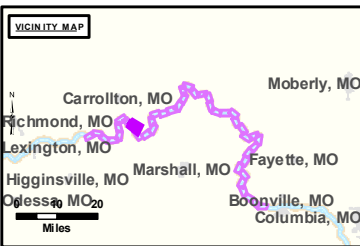


Notes

Waverly Gage = 14.21 at time of collection 19 August 2020"

Gage_L



LEGEND

	< 8		< 8 ft		Green Passing		Green		Green CAN
	8 - 9		8 - 9 ft		Red Passing		Red		Red NUN
	9 - 9.5		9 - 10 ft		Green Crossing		Junction		
	9.5 - 10		10 - 12 ft		Red Crossing				
	10 - 12		River Mile						
	12 - 14		Sailing Line						
	14 - 16		BSNP Structure						
	> 16		Levee						

Buoy

0 312.5 625 937.5 1,250 2,500 Feet

NOTES:
Horizontal Coordinate System: World Geodetic System of 1984 (WGS84), projected to the Universal Transverse Mercator (UTM) Zone 15 North. Distance units in U.S. Survey Feet.
Vertical Datum: Soundings are shown in feet and indicated depths are referenced to water surface at time of collection.
The information depicted on this map represents the results of a survey conducted on the date indicated and can only be considered to represent the general condition existing at that time.
The location of navigation aids are based on and provided by the U.S. Coast Guard.

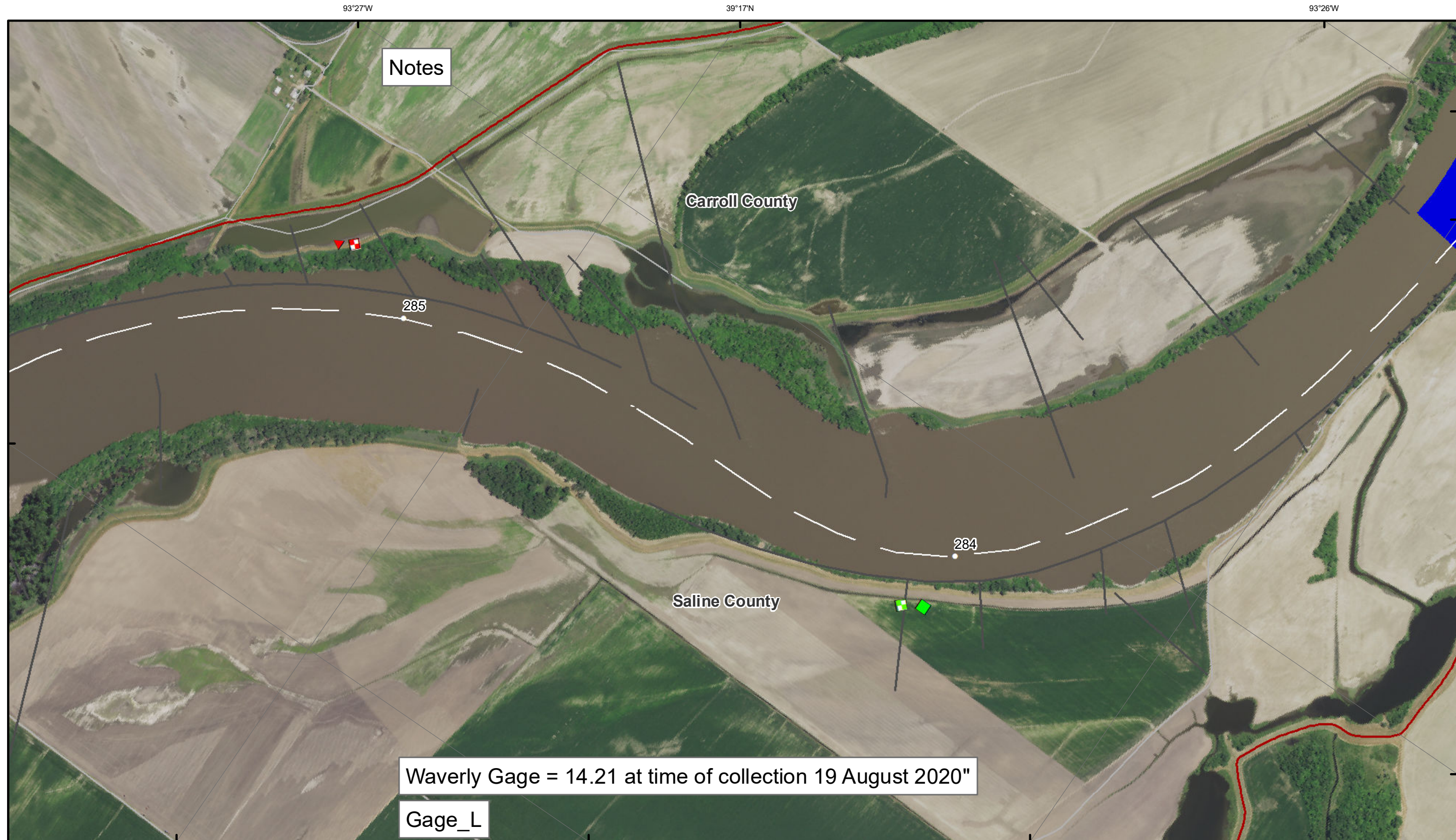


DISCLAIMER: The U.S. Army Corps of Engineers (USACE) provides this information as a service to the public. It is not intended to be used for any purpose other than that for which it was provided. The USACE makes no warranty, express or implied, regarding the accuracy, reliability, or completeness of the information. The user assumes all liability for any use of the information. The USACE is not responsible for any damage or loss resulting from the use of this information. The USACE is not liable for any damage or loss resulting from the use of this information. The USACE is not liable for any damage or loss resulting from the use of this information.

KANSAS CITY DISTRICT MISSOURI RIVER AREA OFFICE	
Submitted By:	MRAO
Reviewed By:	MRAO
Checked By:	MRAO

Survey Information
MO_03_LMR_20200819_CS_282_0_283_0_SORT
19 August 2020

Sheet Number
34 of 42



Notes

Waverly Gage = 14.21 at time of collection 19 August 2020"

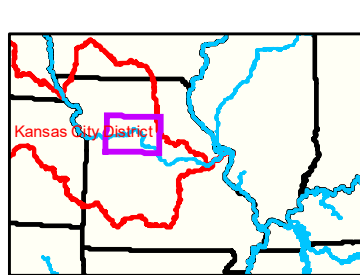
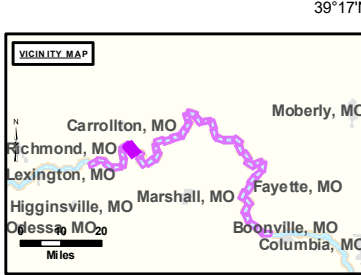
Gage_L



DISCLAIMER: The U.S. Army Corps of Engineers (USACE) provides this information for informational purposes only. It is not intended for navigation or other critical applications. The data is provided as-is and is not guaranteed to be accurate or complete. The user assumes all liability for any use of this information. The USACE is not responsible for any damage or loss resulting from the use of this information.

KANSAS CITY DISTRICT MISSOURI RIVER AREA OFFICE	
Submitted By:	MRAO
Reviewed By:	MRAO
Checked By:	MRAO
Approved:	

Survey Information
 MO_03_LMR
 MO_03_LMR_20200819_CS_282_0_283_0_SORT
 19 August 2020



LEGEND

< 8	< 8 ft	Green Passing	Green	Green CAN
8 - 9	8 - 9 ft	Red Passing	Red	Red NUN
9 - 9.5	9 - 10 ft	Green Crossing	Junction	
9.5 - 10	10 - 12 ft	Red Crossing		
10 - 12	River Mile			
12 - 14	Sailing Line			
14 - 16	BSNP Structure			
> 16	Levee			

Scale: 0 to 2,500 Feet

Vertical Datum: Soundings are shown in feet and indicated depths are referenced to water surface at time of collection.

The information depicted on this map represents the results of a survey conducted on the date indicated and can only be considered to represent the general condition existing at that time.

The location of navigation aids are based on and provided by the U.S. Coast Guard.



Sheet Number
35 of 42